



# KEEP PERSONNEL AND COMMUNITIES SAFER

APX MISSION-CRITICAL P25 COMMUNICATIONS





# THE BEST OF WHAT WE DO

People count on you to get the job done no matter if you are a police officer or a firefighter. You may be serving in the military or work for a federal agency. You may be inspecting bridges or clearing blocked sewers. Whatever you do, there's no room for error. Your job is mission critical.

APX™ radios exist for this purpose. They're designed to be reliable and to optimize your communications, specifically in extreme environments and during life-threatening situations.

Even with the widest portfolio in the industry, APX continues to evolve. The latest APX N next generation radio lineup delivers revolutionary new capabilities to keep you safer and more effective.

---

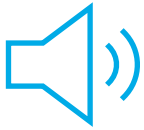
**WE'VE PUT EVERYTHING WE'VE  
LEARNED OVER THE LAST 90 YEARS  
INTO APX. THAT'S WHY IT REPRESENTS  
THE VERY BEST OF THE OUR PORTFOLIO.  
THERE IS NO BETTER.**



## OUTLAST AND OUTPERFORM

RELIABLE COMMUNICATIONS ARE  
NON-NEGOTIABLE

APX two-way radios are designed for extreme durability, so you can count on them to work under the toughest conditions. Our rugged portable and mobile radio designs are built to last - day in and day out.



## HEAR AND BE HEARD

CLEAR COMMUNICATION CAN MAKE  
A DIFFERENCE

The APX family is designed to help you hear and be heard with unparalleled clarity, so you're confident your message will always get through. Multiple microphones, background noise suppression and windporting technology minimize noise from wind, crowds and sirens. And the loud and clear speaker ensures you can hear over background sounds.



## KEEP INFORMATION PROTECTED

EVERYDAY, SECURITY IS BEING PUT TO THE TEST

With the APX family, you can be sure that your calls stay private, secure and confidential. APX supports multiple types of standard and custom encryption. The MACE hardware encryption module within an APX radio provides a hardened, tamper-resistant design for storing encryption keys.



## MADE FOR THE MISSION

APX RADIOS ARE INTUITIVE AND EASY TO USE

A distinctive "T-grip" shape allows devices to be securely held with gloved hands or in wet environments. Positive action controls minimize the risk of accidental operation, while extreme ergonomic models are designed for specialized conditions. Displays are easy to read, day and night, and placed just where you need them — or leave the display off for covert operations.



## INTELLIGENCE IN ACTION

AN ECOSYSTEM OF CONNECTIVITY HELPS TO  
KEEP YOU SAFE

APX radios can prioritize emergency calls, send a signal automatically when they sense that use user has fallen or is involved in a collision, provide a Bluetooth® beacon to find missing personnel, and automate responses to specific events or when detecting a geofence. And upon recognizing poor signal quality, APX radios can route voice and data over broadband.





# APX 8000 SERIES ALL-BAND P25 PORTABLE AND MOBILE RADIOS

CHAOS DOESN'T STOP AT BORDERS.  
CRIMINALS DON'T RESPECT BOUNDARIES.  
SO YOUR COMMUNICATIONS SHOULDN'T BE  
LIMITED TO LOCAL FREQUENCIES.

With multi-mode access to all four major P25 bands, APX 8000 series radios know no limits when it comes to interoperability. You can work seamlessly with virtually any agency on any P25 system—and all from a single radio. Stay connected further with the high-power configuration of the APX 8500 mobile. And if that isn't enough – APX 8000 series radios can reroute your P25 communication over available broadband networks and keep you connected when outside of P25 coverage.

Whether you're yelling for backup or quietly whispering for assistance, you still need that message to get through. The APX 8000 Adaptive Audio Engine dynamically adjusts the radio's audio response to deliver optimal clarity. Wind is filtered out and background noise is wiped away. Quiet audio is boosted and feedback howl is suppressed.

Security is more important than ever. Cyber-criminals are testing you on the streets and over the air. Fight back with the entire toolbox. Supporting simultaneous multi-protocol encryption and certified to FIPS 140-2 level 3, the APX 8000 series radios keep your critical communications absolutely iron-tight.



## APX 8000HXE

**360 DEGREES OF SAFETY**

All-band HazLoc portable radio for fire and rescue teams.



## APX 8000H

**360 DEGREES OF PROTECTION**

All-band HazLoc portable radio for first responders and military teams. Available with SRX enhancement package.



## APX 8000XE

**UNLIMITED MOBILITY. EXTREME PERFORMANCE.**

All-band portable radio for fire and rescue teams.



## APX 8000

**UNLIMITED MOBILITY. UNCOMPROMISING PERFORMANCE.**

All-band portable radio for first responders.



## APX 8500

**UNLIMITED MOBILITY. MAXIMUM CONNECTIVITY**

All-band mobile radio available in high power and mid power versions.



# APX 6000 SERIES SINGLE-BAND P25 PORTABLE AND MOBILE RADIOS

THE APX 6000 IS BUILT ON DECADES OF PUBLIC SAFETY EXPERIENCE TO DELIVER EFFORTLESS COMMUNICATION WHEN YOU NEED IT THE MOST.

For a single-band radio, the APX 6000 series does not lack in features. From ergonomics to audio quality, these radios are designed to outperform.

A non-slip T-grip shape sets the portable radio firmly in your hands while optimized placement of button and knobs offer immediate access to radio controls. Need to find the emergency button? Simply slide your hand down the portable radio antenna or reach for the top right corner of the mobile.

The APX 6000 picks up your speech from any direction, and then the innovative APX Adaptive Audio Engine applies exactly the right amount of processing: enough to remove background noise, but not enough to degrade speech quality. Dynamically adjusting its algorithms as external conditions change, the APX 6000 automatically gives you the best audio that's possible.

Out on the streets, APX 6000 series radios are ready to take all the abuse you can throw at them. Our rugged designs protect portable radios against drops, water and dust, while keeping mobile radios intact during vehicle impacts. Because when your life is on the line every day, you can't afford to carry an ordinary radio.



**APX 6000XE**  
RELIABLE.  
RESPONSIVE.  
READY FOR THE  
EXTREMES.

Single-band portable radio for fire and rescue teams.



**APX 6000**  
RELIABLE.  
RESPONSIVE.  
READY FOR  
ANYTHING.

Single-band portable radio for first responders.



**SRX 2200**  
RELIABLE.  
RESPONSIVE.  
READY FOR  
ACTION.

Single-band portable radio for military teams.



**APX 6500**  
RELIABLE.  
RESPONSIVE.  
READY FOR  
THE STREETS.

Single-band mobile radio.



# APX 3000 AND APX 4000 SERIES SINGLE-BAND P25 PORTABLE AND MOBILE RADIOS

## P25 RELIABILITY AND PERFORMANCE WITH SOME OF OUR MOST POPULAR FEATURES.

You need P25 technology and you need the legendary reliability and performance of an APX radio, but you may not need all the features of a higher tier radio. The APX 4000 and 3000 series radios seamlessly connect agencies and departments throughout your city for fast, interoperable communications.

Built on a rugged, reliable platform, the APX 4000 is engineered to survive in the real world, with a screen made from tough Corning® Gorilla Glass. Equipped with dual microphones, noise cancellation and powerful audio processing the APX 4000 delivers great audio in noisy conditions.

With no display or speaker, the APX 3000 is designed to be used with earpieces and remote PTT buttons for covert operations.

But we know its not just about the audio and reliability, which is why we also included advanced features - like hardware-based encryption, Mission-Critical Bluetooth, GPS location-tracking and IMPRES smart battery support.



### APX 4000XH

**BUILT SAFE. INSIDE AND OUT.**

Single-band HazLoc portable radio for Canada.



### APX 4000

**BETTER EQUIPPED FOR CLOSER COLLABORATION.**

Single-band portable radio for first responders.



### APX 3000

**STAY SAFE, CONNECTED AND DISCREET**

Specialized covert radio for undercover teams.

### APX 4500

**BETTER EQUIPPED FOR CLOSER CONNECTIVITY.**

Single-band mobile radio.



# APX 900 AND APX 1500 SINGLE-BAND P25 PORTABLE AND MOBILE RADIOS

## P25 CONNECTIVITY. EXCEPTIONAL PRICE.

From city festivals to natural disasters, seamless communication is critical to coordinating effective and safe responses. The APX 900 is simple to use and is certified for reliable P25 communication on P25 compliant radio networks.

The APX 900 provides additional ruggedness and complies with P25 encryption algorithms, so you can collaborate confidently and securely between agencies.

The APX 1500 mobile radio provides rugged simplicity with built-in loud and clear speaker, full color display and single knob controls. This self-contained dash-mount configuration is easy to install in most vehicles.



### APX 900 ESSENTIAL COMMUNICATION. EXCEPTIONAL SERVICE.

Dual-knob, single-band  
portable radio.



### APX 1500 SIMPLE. EASY-INSTALL. MISSION-CRITICAL.

Single-band mobile radio.



## 02 CONTROL HEAD

### EXTREME USABILITY

The 02 control head provides rugged simplicity for efficient and confident communication. Extreme controls with an easy-to-read color display and a built-in 7.5 watt speaker provides clear visual and audible user experiences. Available in high-impact green or black.



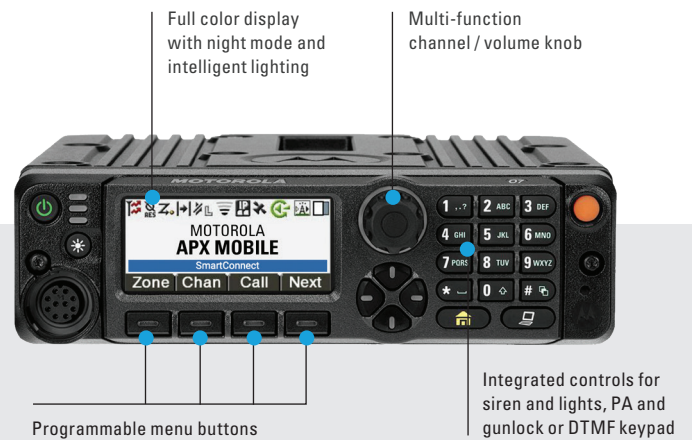
## 03 HANDHELD CONTROL HEAD

### HANDHELD FLEXIBILITY

The 03 corded control head fits all your mobile controls in your hand. With the 03 your radio controls are never out of reach.



# APX CONTROL HEADS\*



## E5 CONTROL HEAD

### UNMATCHED READABILITY. OPTIMIZED USABILITY.

A bright color display and intelligent lighting makes the E5 easy to read under any condition while the optimized tactility and button placement reduces inadvertent actuations.

## 07 CONTROL HEAD

### INTEGRATED MULTI-FUNCTIONALITY

The 07 is a sophisticated control head with a color display and built-in keypad. It can integrate your radio vehicle control into a single ergonomic interface and supports dual radio installations.



# MEET APX N

## THE BEST IN WHAT WE DO, EVOLVED.

Our APX N line of P25 radios gives you the next-generation capabilities you need with the core functionality you expect - rugged, secure, intuitive mission-critical communications.

Built on the rugged APX framework, APX N radios are ready to work where you work. All models are IP68 rated and tested to military standards with large screens and easy to navigate menus. Sleek lines, easy to hold, and intentionally designed for easy operation with intuitive interfaces, large controls, programmable buttons and ViQi voice control.

Loud and clear audio with background noise suppression keeps teams communicating in chaotic environments. Radios work reliably across a variety of P25 channels and can even switch to SmartConnect when out of coverage. And, you can keep your entire fleet up-to-date and secure by batch programming over WiFi, without taking them out of service.

APX N - an industry-leading combination of durability and performance to keep your teams safer and more efficient. Engineered for today and ready for what's next in mission-critical communications and your wider public-safety ecosystem.

# APX NEXT SERIES

## ALL-BAND P25

### SMART RADIOS

MISSION-CRITICAL PERFORMANCE ENSURES YOUR LIFELINE IS THERE WHEN YOU NEED IT. NATURAL INTERFACES—FROM LARGE TOUCH SCREENS TO VOICE CONTROLS—KEEP YOUR EYES UP AND YOUR ATTENTION WHERE IT MATTERS. AND NEW APPLICATIONS AND SERVICES, LIKE SMARTCONNECT AND VIQI, BRING NEW INTELLIGENCE TO THE FIELD.

Our APX NEXT Series reduces configuration time and update cycles from months to minutes. Devices can be provisioned and updated in the cloud, and new capabilities—like video, data analytics, and AI applications—can be added as your needs evolve.

The APX NEXT Series brings usability and performance advancements to every aspect of the radio experience. Interfaces are streamlined. Workflows are accelerated. Mission-critical reliability is ensured. And the focus that keeps critical personnel safe and effective, is protected.



#### APX NEXT

##### PROTECT YOUR FOCUS

All-band portable radio for first responders.



#### APX NEXT XE

##### FOCUSED IN THE EXTREME

All-band radio with exaggerated knobs and controls.



#### APX NEXT XN

##### OUTPERFORM THE UNEXPECTED

All-band radio certified to NFPA 1802 for firefighters.





# APX N70 SINGLE-BAND P25 SMART RADIO

## FOCUSED. FORWARD.

The APX N70 gives frontline public safety personnel the mission-critical communications and real-time information they need to respond quickly and safely.

It's inherently rugged with a toughened touch screen display and superior impact resistance. Intuitive interfaces and large controls ensure reliable eyes-up operation in extreme conditions.

Whatever the environment, hear and be heard with the loudest and clearest audio possible. HDR mic inputs reproduce voices with uncompromising clarity.

The APX N70 works reliably across a variety of frequencies, modes and protocols. Multiple hardware encryption algorithms keep communications secure, while optional functionality including LTE and smart apps helps add actionable intelligence in the field.



# APX N50

## SINGLE-BAND P25

## PORTABLE RADIO

**SIMPLE. RELIABLE. SECURE.**

The APX N50 is a slim yet tough pick-up-and-go radio that's designed to give first responders, public-safety support and administrative staff secure communications they can rely on in the field to stay connected and collaborative, whenever wherever.

ViQi Basic Voice Control and intuitive interfaces make it simple to use on the go. Advanced speakers and HDR mics combined with leading APX audio algorithms automatically filter background noise and adjust volume levels to the environment, keeping hands free and eyes up.

Connect to accessories and other devices via Bluetooth or even switch between LMR coverage and Wi-Fi with SmartConnect. Hardware encryption algorithms, batch radio programming tools, and a portfolio of services keep communications secure and up-to-date.



# APX N30 SINGLE-BAND P25 PORTABLE RADIO

## EASY. EFFICIENT. ESSENTIAL.

Seamless communication from a sleek radio. Easy to use and simple to manage. The APX N30 single-band P25 portable radio connects your teams to reliable P25 radio networks with all the essential features they need and nothing that they don't. The radio solution for mobile workers in public works, government services, and other municipal roles looking for APX performance in a pared down, cost effective package.

Easy to carry and tough enough for use in harsh environments. ViQi Basic Voice Control, large controls and display make it simple to use on the go. And with loud and clear audio, crucial messages get through, even in noisy environments. With SmartConnect, automatically switch between radio coverage and Wi-Fi connections to keep teams moving.





# APX RADIO ACCESSORIES

OUR ACCESSORY LINEUP IS FOCUSED ON DURABILITY AND FLEXIBILITY TO KEEP YOU SAFER IN MISSION CRITICAL MOMENTS.

Get the most out of your APX radio by extending its power and reliability with resilient APX accessories. They are the only accessories tested and certified for use with APX radios. Our accessories endure rigorous testing to last longer and help keep you safer. There's simply no substitute for Motorola APX accessories.



**ENERGY**



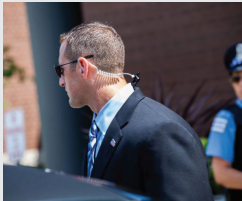
**AUDIO**



**CARRY**



**MOBILE**



**COVERT**

# APX PORTABLE RADIOS

		SMART	ALL-BAND	SINGLE-BAND	
		APX NEXT Series	APX 8000 Series	APX N70	APX 6000 Series & SRX 2200
<b>FREQUENCY BANDS</b>					
VHF	136-174 MHz	(Y)	(Y)	**	(Y)
UHF Range 1	380-470 MHz	(Y)	(Y)	**	(Y)
UHF Range 2	450-512 MHz	(Y)	(Y)	**	(Y)
700/800 MHz	762-870 MHz	(Y)	(Y)	Y	(Y)
900 MHz	896-902, 935-941MHz	-	-	-	-
8/900 MHz	851-870 and 935-940 MHz bands	-	-	-	-
All-Band	VHF, UHF R1, UHF R2, 700/800 simultaneously	Y	Y	-	-
Number of Channels	Max number of channels programmable	3000	3000	1000 (3000)	1000 (3000)
<b>OPERATION MODES</b>					
Analog Conventional	FM analog non-trunked communications	Y	Y	Y	Y
Analog Trunking	SmartNet, SmartZone, QCII	(Y)	(Y)	(Y)	(Y)
Digital P25 Phase I	FDMA, Conventional and Trunking	(Y)	(Y)	(Y)	(Y)
Digital P25 Phase II	TDMA Trunking	(Y)	(Y)	(Y)	(Y)
Interoperability (3600 & 9600)	Automatic switching between P25 Phase I and II	(Y)	(Y)	(Y)	(Y)
IV&D	Integrated Voice and Data	Y	Y	Y	Y
<b>ENVIRONMENTAL</b>					
Ingress Protection	Sealing against dust and water	IP68: 2 m, 4 hr	APX 8000HXE & XE - IP68: 2 m, 4 hr APX 8000H & 8000 - IP68: 2 m, 2 hr	(IP68: 2 m, 4 hr)	APX 6000XE & SRX 2200 - IP68: 2 m, 4 hr APX 6000 - IP68: 2 m, 2 hr
Delta-T Testing	Differential temperature sealing test	Y	APX 8000HXE & XE - Y APX 8000H & 8000 - (Y)	(Y)	APX 6000XE & SRX 2200 - Y APX 6000 - (Y)
HazLoc	Hazardous location certification	(Class I, Div 2)	APX 8000HXE & H - Class I, Div 1 & 2 APX 8000XE, (8000) - Class I, Div 2	(Class I, Div 1 & 2)	(Class I, Div 1 & 2)
NFPA 1802	NFPA 1802 Certification	APX NEXT XN - Y	-	-	-
<b>AUDIO</b>					
Adaptive Audio Engine	Dynamic optimization of noise suppression	Y	Y	(Y)	(Y)
Number of Microphones	Support for multi-mic noise suppression	3	3	2 (3)	2 (3)
Output Power	Maximum rated audio power	3 W	3 W	.5/1 (3/5) W	500 mW (3 W)
<b>SECURITY, SAFETY</b>					
Algorithms	Supported encryption algorithms	(256-bit AES, ADP, DES, DES-XL, DES-OFB, DVP-XL)	(256-bit AES, ADP, DES, DES-XL, DES-OFB, DVP-XL)	(256-bit AES, ADP, DES, DES-XL, DES-OFB, DVP-XL)	(256-bit AES, ADP, DES, DES-XL, DES-OFB, DVP-XL)
Multikey	Number of programmable keys	128	128	64	64
Method	Encryption implementation	Hardware	Hardware	Hardware	Hardware
Encryption Standards	Level of encryption offered	FIPS 140-3 Level 3, FIPS 197	FIPS 140-3 Level 3, FIPS 197	FIPS 140-3 Level 3, FIPS 197	FIPS 140-3 Level 3, FIPS 197
Over-the-Air Rekeying	Remote update of encryption keys	(Y)	(Y)	(Y)	(Y)
<b>CONNECTIVITY</b>					
Broadband	Broadband network support	LTE, WiFi	(WiFi)	(LTE, WiFi)	(WiFi)
SmartConnect	Seamlessly switch between P25 and broadband	(via LTE or WiFi)	(via WiFi)	(via LTE or WiFi)	(via WiFi)
Bluetooth	Secure personal area network, for wireless accessories	5.0 NFC hardware ready	4.0 MPP	5.0 NFC hardware ready	4.0 MPP
Data Modem Tethering	Data offload to external modem via WiFi	-	(Y)	-	(Y)
<b>LOCATION-TRACKING</b>					
GPS/GLONASS	Receiver for radio location-tracking	Y	Y	Y	Y
Mission-Critical Geofence	Automated responses to changes in radio location	-	(Y)	-	(Y)
SmartLocate	Route location data over broadband	(Y)	-	(Y)	-
SmartMapping	Mapping app to locate other radios	(Y)	-	(Y)	-
<b>OTHER FEATURES</b>					
ViQi Virtual Partner	Database query using virtual assistant	(Y)	-	(Y)	-
ViQi Voice Control	Operate radio using spoken commands	(Y)	-	(Y)	-
SmartMessaging	Multimedia messaging	(Y)	-	(Y)	-
RFID	Embedded wireless inventory tracking tag	-	(Y)	-	(Y)
Voice Announcement	Audio announcement of change in radio status	Y	Y	Y	Y
Intelligent Lighting	Programmable display backlight color alert	Y	Y	Y	Y
Instant Recall	Replay of last received call	Y	Y	Y	Y
Man Down/Fall Alert	Programmable response to movement & orientation	Y	(Y)	Y	(Y)
IMPRES / IMPRES 2	Intelligent battery and charging technology,	N/Y	Y/Y	N/Y	Y/Y
<b>DISPLAY &amp; KEYPAD CONFIGURATION MODELS</b>					
4.5: Touchscreen and top display		Y	-	Y	-
3.5: Front display, full keypad, top display		-	(Y)	-	(Y)
2.5: Front display, limited keypad, top display		-	(Y)	-	(Y)
1.5: Top display only		-	(Y)	-	(Y)
3: Front display, full keypad		-	-	-	-
2: Front display, limited keypad		-	-	-	-
1: No display or keypad		-	-	-	-

# APX PORTABLE RADIOS

		SINGLE-BAND					
		APX N50	APX 4000XH	APX 4000	APX 3000	APX N30	APX 900
<b>FREQUENCY BANDS</b>							
VHF	136-174 MHz	(Y)	-	(Y)	(Y)	(Y)	(Y)
UHF Range 1	380-470 MHz	**	-	(Y)	(Y)	**	(Y)
UHF Range 2	450-512 MHz	**	-	(Y)	(Y)	**	(Y)
700/800 MHz	762-870 MHz	(Y)	-	(Y)	(Y)	(Y)	(Y)
900 MHz	896-902, 935-941MHz	-	-	(Y)	-	-	(Y)
8/900 MHz	851-870 and 935-940 MHz bands	-	Y	-	-	-	-
All-Band	VHF, UHF R1, UHF R2, 700/800 simultaneously	-	-	-	-	-	-
Number of Channels	Max number of channels programmable	512 (1000)	512 (1000)	512 (1000)	512	512	512
<b>OPERATION MODES</b>							
Analog Conventional	FM analog non-trunked communications	Y	Y	Y	Y	Y	Y
Analog Trunking	SmartNet, SmartZone, QCI	(Y)	(Y)	(Y)	(Y)	(Y)	(Y)
Digital P25 Phase I	FDMA, Conventional and Trunking	(Y)	(Y)	(Y)	(Y)	(Y)	(Y)
Digital P25 Phase II	TDMA Trunking	(Y)	(Y)	(Y)	(Y)	(Y)	(Y)
Interoperability (3600 & 9600)	Automatic switching between P25 Phase I and II	(Y)	(Y)	(Y)	(Y)	-	-
IV&D	Integrated Voice and Data	Y	Y	Y	Y	Y	Y
<b>ENVIRONMENTAL</b>							
Ingress Protection	Sealing against dust and water	IP68: 2 m, 2 hr	IP68: 2 m, 2 hr	IP67	IP67	IP68: 2 m, 2 hr	IP68: 2 m, 2 hr
Delta-T Testing	Differential temperature sealing test	-	-	(Y)	-	-	-
HazLoc	Hazardous location certification	(Class I, Div 1 & 2)	CSA 157	(Class I, Div 1 & 2)	-	(Class I, Div 1 & 2)	(Class I, Div 1 & 2)
NFPA 1802	NFPA 1802 Certification	-	-	-	-	-	-
<b>AUDIO</b>							
Adaptive Audio Engine	Dynamic optimization of noise suppression	(Y)	-	-	-	-	-
Number of Microphones	Support for multi-mic noise suppression	2 (3)	2	2	-	2	1
Output Power	Maximum rated audio power	.5/1 (1/3) W	500 mW	500 mW	-	.5/1 W	500 mW
<b>SECURITY, SAFETY</b>							
Algorithms	Supported encryption algorithms	(256-bit AES, ADP, DES, DES-XL, DES-OFB, DVP-XL)	ADP	(256-bit AES, ADP)	(256-bit AES, ADP, DES, DES-XL, DES-OFB, DVP-XL)	(256-bit AES, ADP)	(256-bit AES SW, ADP)
Multikey	Number of programmable keys	48	48	48	48	48	48
Method	Encryption implementation	Hardware	Hardware	Hardware	Hardware	Software	Software
Encryption Standards	Level of encryption offered	FIPS 140-3 Level 3 FIPS 197	FIPS 140-3 Level 3, FIPS 197	FIPS 140-3 Level 3, FIPS 197	FIPS 140-3 Level 3, FIPS 197	FIPS 140-3 Level 1 FIPS 197	FIPS 140-3 Level 1 FIPS 197
Over-the-Air Rekeying	Remote update of encryption keys	(Y)	-	-	(Y)	-	-
<b>CONNECTIVITY</b>							
Broadband	Broadband network support	(WiFi)	-	-	-	(WiFi)	-
SmartConnect	Seamlessly switch between P25 and broadband	(via WiFi)	-	-	-	(via WiFi)	-
Bluetooth	Secure personal area network, for wireless accessories	4.2	2.1	2.1	2.1	4.2	4.0 LE
Data Modem Tethering	Data offload to external modem via WiFi	(Y)	-	-	-	(Y)	-
<b>LOCATION-TRACKING</b>							
GPS/GLONASS	Receiver for radio location-tracking	Y	Y	Y	Y	Y	Y
Mission-Critical Geofence	Automated responses to changes in radio location	(Y)	(Y)	(Y)	(Y)	(Y)	-
SmartLocate	Route location data over broadband	-	-	-	-	-	-
SmartMapping	Mapping app to locate other radios	-	-	-	-	-	-
<b>OTHER FEATURES</b>							
ViQi Virtual Partner	Database query using virtual assistant	-	-	-	-	-	-
ViQi Voice Control	Operate radio using spoken commands	(Basic)	-	-	-	(Basic)	-
SmartMessaging	Multimedia messaging	-	-	-	-	-	-
RFID	Embedded wireless inventory tracking tag	-	-	(Y)	-	-	(Y)
Voice Announcement	Audio announcement of change in radio status	Y	Y	Y	Y	Y	Y
Intelligent Lighting	Programmable display backlight color alert	Y	Y	Y	Y	Y	-
Instant Recall	Replay of last received call	Y	Y	Y	Y	Y	Y
Man Down/Fall Alert	Programmable response to movement & orientation	(Y)	(Y)	(Y)	(Y)	(Y)	-
IMPRES / IMPRES 2	Intelligent battery and charging technology,	N/Y	Y/N	Y/N	Y/N	N/Y	Y/N
<b>DISPLAY &amp; KEYPAD CONFIGURATION MODELS</b>							
4.5: Touchscreen and top display		-	-	-	-	-	-
3.5: Front display, full keypad, top display		-	-	-	-	-	-
2.5: Front display, limited keypad, top display		-	-	-	-	-	-
1.5: Top display only		-	-	-	-	-	-
3: Front display, full keypad		-	Y	(Y)	-	-	(Y)
2: Front display, limited keypad		Y	-	(Y)	-	Y	(Y)
1: No display or keypad		-	-	-	Y	-	-



# APX MOBILE RADIOS

		ALL-BAND	SINGLE-BAND	SINGLE-BAND	SINGLE-BAND
		APX 8500	APX 6500	APX 4500	APX 1500
<b>FREQUENCY BANDS</b>					
VHF	Operation in 136-174 MHz band	Y	(Y)	(Y)	(Y)
UHF Range 1	Operation in 380-470 MHz band	Y	(Y)	(Y)	(Y)
UHF Range 2	Operation in 450-512 MHz band	Y	(Y)	(Y)	(Y)
700/800 MHz	Operation in 762-870 MHz band	Y	(Y)	(Y)	(Y)
900 MHz	Operation in 896-941MHz band	-	(Y)	(Y)	-
All-Band	VHF, UHF R1, UHF R2, 700/800 simultaneously	Y	-	-	-
Number of Channels	Max number of channels programmable	3000	1000 (3000)	512 (1000)	512
High-power Version	Availability of 110 W radio variant	(Y)	-	-	-
<b>OPERATION MODES</b>					
Analog Conventional	FM analog non-trunked communications	Y	Y	Y	-
Analog Trunking	SmartNet, SmartZone, QCI	(Y)	(Y)	(Y)	-
Digital P25 Phase I	FDMA, Conventional and Trunking	(Y)	(Y)	(Y)	Y
Digital P25 Phase II	TDMA Trunking	(Y)	(Y)	(Y)	(Y)
Interoperability (3600 & 9600)	Automatic switching between P25 Phase I and II	(Y)	(Y)	-	-
IV&D	Integrated Voice and Data	Y	Y	Y	Y
<b>AUDIO</b>					
Audio Output Power	Maximum rated audio power	7.5 W, 8 Ω 15 W, 3.2 Ω	7.5 W, 8 Ω 15 W, 3.2 Ω	7.5 W, 8 Ω 15 W, 3.2 Ω	7.5 W, 8 Ω 15 W, 3.2 Ω
<b>SECURITY, SAFETY</b>					
Algorithms	Supported encryption algorithms	(256-bit AES, ADP, DES, DVP)	(256-bit AES, ADP, DES, DVP)	(256-bit AES, ADP, DES, DVP)	(256-bit AES, ADP)
Algorithm Capacity	Number of simultaneous encryption schemes	8	8	8	8
Multikey	Number of programmable keys	128	64	48	48
Method	Encryption implementation	Hardware	Hardware	Hardware	Software
Encryption Standards	Level of encryption offered	FIPS 140-3 Level 3 FIPS 197	FIPS 140-3 Level 3 FIPS 197	FIPS 140-3 Level 3 FIPS 197	FIPS 140-3 Level 1 FIPS 197
Over-the-Air Rekeying	Remote update of encryption keys	(Y)	(Y)	-	-
<b>CONNECTIVITY</b>					
WiFi	Local area network support	(Y)	(Y)	(Y)	-
SmartConnect	Seamless switch between P25 and broadband	(tethered, or via WiFi)	(tethered, or via Wi-Fi)	-	-
Data Modem Tethering	Data offload to external modem such as LTE, Wi-Fi or satellite	(Y)	(Y)	(Y)	-
<b>LOCATION-TRACKING</b>					
GPS/GLONASS	Receiver for radio location-tracking	Y	Y	Y	Y
Mission-Critical Geofence	Automated responses to changes in radio location	(Y)	(Y)	(Y)	(Y)
<b>OTHER FEATURES</b>					
ViQi Virtual Partner	Database query using virtual assistant	(Y)	(Y)	-	-
RFID	Embedded wireless inventory tracking tag	(Y)	(Y)	(Y)	(Y)
Voice Announcement	Audio announcement of change in radio status	Y	Y	Y	Y
Instant Recall	Replay of last received call	Y	Y	Y	Y
Intelligent Lighting	Programmable display backlight color alert	(Y)	(Y)	(Y)	-
Impact Detection	Automatic alert to a collision	(Y)	(Y)	(Y)	-
<b>CONTROL HEAD COMPATIBILITY</b>					
07 Enhanced Control Head		(Y)	(Y)	-	-
E5 Control Head		(Y)	(Y)	-	-
05 Standard Control Head		(Y)	(Y)	-	-
03 Handheld Control Head		(Y)	(Y)	-	-
02 Rugged Control Head (Green/Gray)		(Y)	(Y)	Y	Gray Only

( ) indicates optional feature

\*\* indicates future feature



## ALL THE SUPPORT YOU NEED

### MANAGE YOUR APX RADIOS IN THE WAY THAT SUITS YOU BEST

Motorola Solutions offers flexible services consumption options to manage your mission critical communication systems. From hardware repair to preventive maintenance, technical support to programming and provisioning, our services ensure that your radio fleet is fully operational and available for end-users. The services are centrally delivered with the right combination of people, process and tools.

For more information, please visit us on the web at: [www.motorolasolutions.com/APX](http://www.motorolasolutions.com/APX)



Motorola Solutions, Inc. 500 West Monroe Street, Chicago, IL 60661 U.S.A. [motorolasolutions.com](http://motorolasolutions.com)

MOTOROLA, MOTO, MOTOROLA SOLUTIONS and the Stylized M Logo are trademarks or registered trademarks of Motorola Trademark Holdings, LLC and are used under license. All other trademarks are the property of their respective owners. © 2023 Motorola Solutions, Inc. All rights reserved. 06-2023 [JP09]