

DIGITAL EVIDENCE MANAGEMENT SOLUTION

**REDEFINING BODY-WORN
CAMERA SYSTEMS
UNIFIED. SIMPLIFIED. SMART.**



IMPLEMENTING A BODY-WORN CAMERA PROGRAM: FINDING THE RIGHT FOCUS FOR YOUR AGENCY

Body-worn cameras are quickly becoming a predominant tool for digital evidence capture to protect officers and the citizens they serve. Body-worn cameras record the content that agencies need to build transparency and accountability with the public. Because they openly document events, body-worn cameras can elevate service while they deepen community trust. At the same time, they can help your agency enhance training, improve officer safety and implement best practices.

Police departments nationwide are benefiting from body-worn cameras – whether it’s significantly decreasing litigation costs or increasing officer safety. Eighty percent of officers say they improve the quality of evidence; 58 percent report they reduced their time spent in court.¹

Body-worn cameras go a long way toward influencing citizen and officer behavior. Almost 90 percent of departments noted a drop in the number

of complaints filed against police and over 70 percent of citizens said cameras were beneficial during their encounters with officers.²

Given the emergence of cameras in policing and the mounting requests for multimedia evidence, what can your agency do to execute a successful, sustainable program?

58%

REPORT THEY REDUCED THEIR TIME SPENT IN COURT

90%

ALMOST OF DEPARTMENTS NOTED A DROP IN THE NUMBER OF COMPLAINTS FILED AGAINST POLICE

70%

OVER OF CITIZENS SAID CAMERAS WERE BENEFICIAL DURING THEIR ENCOUNTERS WITH OFFICERS



**CONSIDERATION #1:
MANAGING DEVICES AND DIGITAL CONTENT**

As your agency begins to capture video, you'll face a growing number of considerations – from which personnel should wear cameras to how to effectively manage content. Along with developing guidelines on who can wear them, you'll need to stipulate whether their use is required or voluntary, and in what situations. Then there's the question of where to place the camera – the head, chest, shooting side or a different area. Your agency should determine which location is best in terms of field of vision, ease of use and comfort.

One of the biggest considerations you will face is data storage. How much video needs to be retained and for how long? Agencies are discovering that given their available resources, capabilities and budgets, they gain the greatest benefit using secured, cloud storage for digital content.

**CONSIDERATION #3:
SECURING THE INTEGRITY OF DATA**

When your agency chooses a body-worn camera solution, you must ensure recorded content is secured and maintains integrity from the moment of capture. Your program should meet the FBI's Criminal Justice Information Services (CJIS) requirements for securing data. Reputable and experienced CJIS-compliant providers can protect the security and integrity of your data with systems that prevent data tampering and unauthorized access.

**CONSIDERATION #2:
CONTROLLING COSTS AND ACCESS**

Costs and staffing can cripple even the best-intentioned agencies who want to adopt body-worn camera programs. Police departments who already rely on full-time officers to handle existing Freedom of Information Act (FOIA) requests say their expenses will increase dramatically as more footage and more video requests pour in.

Data storage presents another critical decision: whether to store content in-house or on a cloud service hosted by a third party. Agencies must take into account the demands on their budgets and IT resources as they scale while meeting legal and chain-of-custody requirements.

**CONSIDERATION #4:
RESPONDING TO RECORDS REQUESTS**

Responding to FOIA and judicial record requests can tax resources and overload staff, yet your agency must make sure response is timely and transparent. This includes searching for and retrieving the right video; determining which portions comply with state disclosure laws for release; redacting any portions that impact the privacy of individuals; and knowing what content can be legally shared.



**AGENCY WORKFLOW CONSIDERATIONS
FOR VIDEO EVIDENCE MANAGEMENT**

KEY AGENCY ROLES

DIVERSE VIDEO CHALLENGES

Officer



- Video uploads are time-consuming
- Lack of tools to organize and review video
- Difficult and time-consuming to retrieve content

**Analyst/Investigator/
Command Staff**



- Difficult to correlate case-related content
- Lack of retention tools to properly mark content
- Challenges using retention tools and adhering to agency policies
- Unable to see the actions of all users

**Judicial/Records
Specialist**



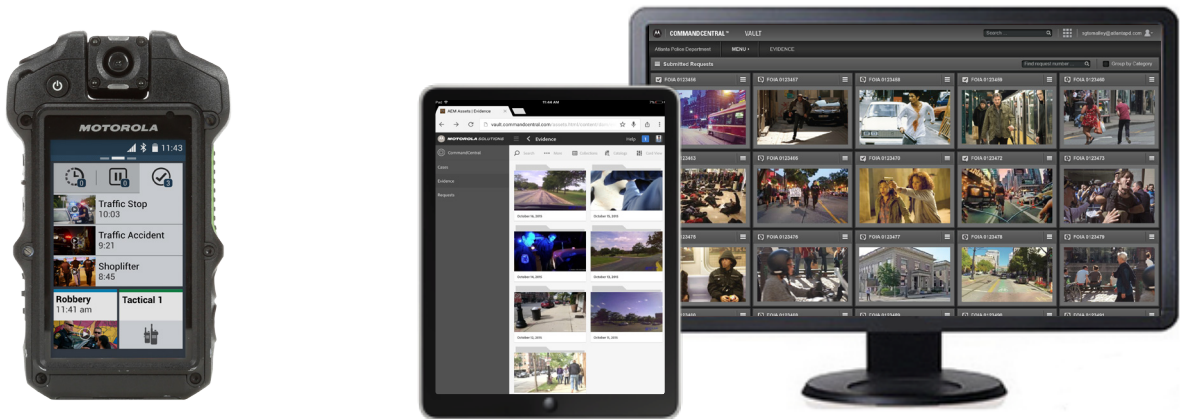
- Complex request and distribution tools
- Lack of restriction controls

Citizens



- Lack of simple records requests tools
- Delayed requests

MOTOROLA'S DIGITAL EVIDENCE MANAGEMENT SOLUTION



Si SERIES VIDEO SPEAKER MICROPHONE + COMMANDCENTRAL VAULT

As video evidence proliferates, agencies are looking for smarter ways to streamline the process and control costs. A holistic end-to-end solution can help to manage the expense of evidence management, enhance the safety and efficiency of officers, and improve interactions with the public.

Motorola's Digital Evidence Management Solution (DEMS) integrates it all. DEMS is a unified, simplified, smart approach that transforms the way your agency captures, stores, manages and shares multimedia content.

DEMS combines our revolutionary Si Series video speaker microphone (audio, video, radio control, and expandable applications in a single

device) with CommandCentral Vault (a complete digital evidence content management solution).

Now your agency can experience a better body-worn camera solution – with streamlined deployment and advanced end-to-end content management.



DIGITAL EVIDENCE MANAGEMENT SOLUTION.

UNIFIED

DEMS includes the Si Series body-worn video speaker microphone that combines voice communications, video, still images, voice recording and emergency alerting into one compact, easy-to-use device reducing hardware complexity for officers and reducing costs for agencies. Integrated with our secured, cloud-based CommandCentral Vault digital evidence management software, it delivers a powerful end-to-end solution.

COMPLETE HARDWARE/SOFTWARE SOLUTION

Experience an integrated body-worn camera, remote speaker microphone and digital evidence management software solution in one. Instead of multiple devices, your officers wear just one video speaker microphone.

Upload video and audio from the Si Series video speaker microphone to CommandCentral Vault quickly and easily via Wi-Fi. From the moment content is securely captured and stored, to its distribution, CommandCentral Vault provides all the tools to streamline workflow. Motorola's Body-Worn Camera Service option gives your agency the flexibility to combine both as a monthly subscription service based on the number of users.

TOTAL INTEGRATION

CommandCentral Vault integrates with your CAD and RMS and across all CommandCentral applications to streamline workflows. Because it efficiently tags, redacts and secures evidence, it minimizes the time it takes to manage digital content and respond to information requests to make evidence sharing easier and more efficient.

SIMPLIFIED

Eliminate the complexity of evidence collection and management. DEMS makes documentation, administration and evidence requests simple and secure. DEMS eliminates recording errors, automatically tags and redacts content, and simplifies managing your budget with predictable pricing.

REDUCE THE NUMBER OF DEVICES

Your officers carry fewer devices in the field using the Si Series that combines a body-worn camera and Motorola APX™ quality remote speaker microphone in one, freeing them to work more safely and efficiently.

SECURITY THROUGHOUT

From the moment content is created by the Si Series video speaker microphones and uploaded to the cloud, to the moment it's shared, it is cryptographically signed. You can trust the integrity of content stored in CommandCentral Vault – and to be secure in a CJIS-capable cloud, which meets FBI requirements for secured data.

EXPEDITE CHAIN OF CUSTODY REQUESTS

Eliminate tedious frame-by-frame redacting with automatic redaction, metadata capture and content tagging that saves time and money; and accurately establishes chain of custody.

NO SURPRISE FEES

Realize greater value with predictable, subscription pricing. Because DEMS is a cloud application, you also don't have to worry about complex integration, infrastructure, or additional IT administrative overhead.

SEAMLESS CONTENT UPLOAD

Automatic uploading of content eliminates administrative time and frees your officers to spend less time managing data and more time policing.

AUTOMATIC TAGGING

Automatically tag data at the moment of capture for faster access to relevant information. Content is automatically tagged with the officer's name, incident ID and location. This metadata makes it easier to search for the exact footage you need.

ELIMINATE RECORDING ERROR

The articulating camera on the Si Series features a wide field-of-view. The 210° articulation gives your officers flexibility in how and where they place their video speaker microphone. Pre-buffering automatically records up to 60 seconds prior to an event.

SMART

DEMS is the smart way to handle digital evidence management – from the intuitive interface on the Si Series video speaker microphones to the way content is automatically and intelligently grouped with CAD and RMS evidence to reduce administrative complexities.

ACCESS INTELLIGENCE QUICKLY

The intuitive Si Series user interface enables fast access to the most relevant intelligence and tools for improved collaboration and information sharing. Customize the interface into three panels to make it easy for your officers to view.

ORGANIZE CONTENT INTELLIGENTLY

DEMS supports automatic uploads, tagging and automatic correlation of metadata to group content from multiple datasets. This saves your agency considerable time spent collecting and storing digital evidence.

AUTO-REDACTION

Intelligent redaction capabilities automatically blur people and objects in recorded videos to eliminate tedious frame-by-frame processes. Simply select the object or individual and CommandCentral Vault will process the request across the entire video, saving hours of time.

EMERGENCY-ACTIVATED RECORDING

The Si Series video speaker microphone automatically starts recording when the emergency button on the device is pressed. This helps improve safety in the field and reduce officer stress.



UNIFIED. SIMPLIFIED. SMART.



Si500 AND Si300 VIDEO SPEAKER MICROPHONES



IMPROVE TRANSPARENCY

A police officer confronts a person of interest outside a local store.

An altercation ensues and a bystander captures it on her smartphone.

The video goes viral on the Internet and many question the officer's behavior.

Because the officer recorded the encounter with his Si500, the agency quickly locates the file in CommandCentral Vault.

The video clip reveals the officer followed department rules and treated the suspect fairly.

SIGHT AND SOUND SIMPLIFIED

Capture critical events instantly and accurately with the Si500 and Si300 video speaker microphones. The Si Series combines voice communications, video, still images and emergency alerting in one compact and easy-to-use device.

CAPTURE CRITICAL EVENTS ON THE FLY

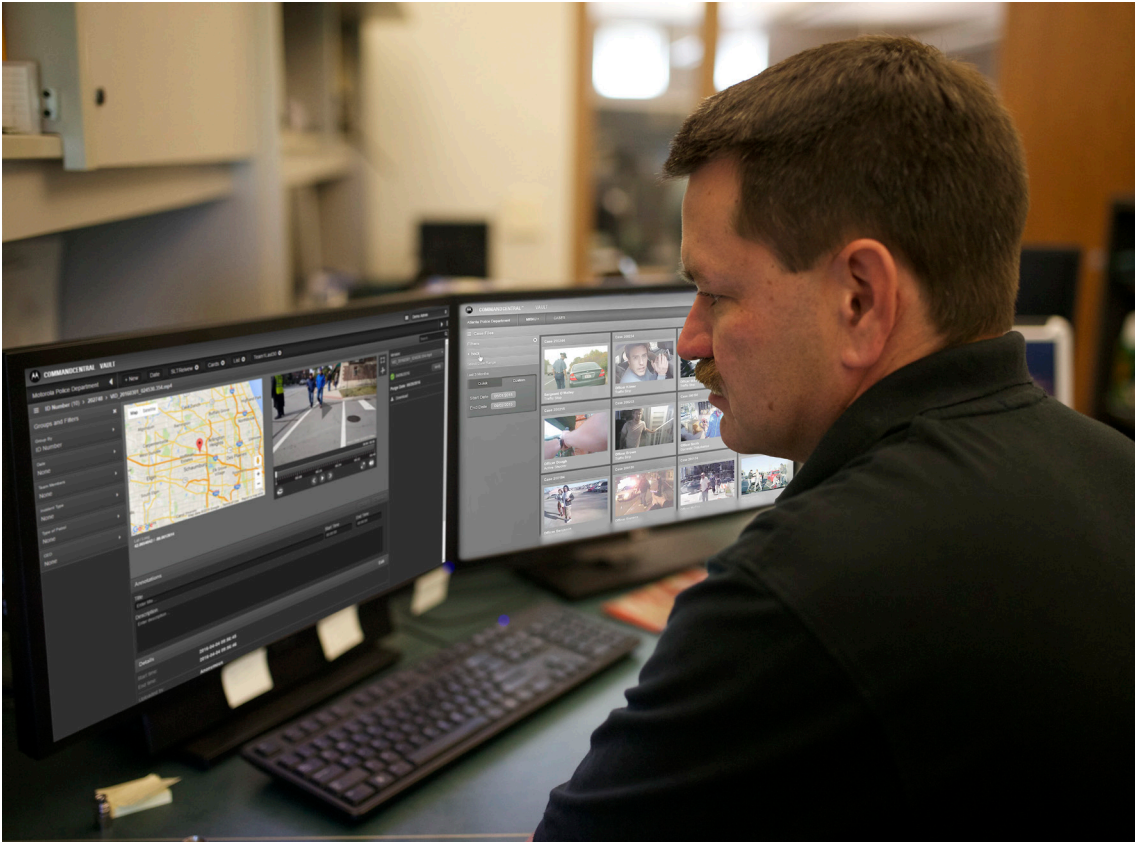
The Si500 and Si300 provide an additional layer of protection for officers and citizens by easily documenting video, voice and still images – all while continuing normal, uninterrupted radio communications. These purpose-built wearables combine intelligent recording along with the best-in-class audio and exceptional performance of our APX radios. Rugged and reliable, their adaptive audio adjusts on the fly for the loudest, clearest audio in any wearing position or environment.

EASY TO INITIATE, SECURE THROUGHOUT

A prominent video recording slider and 210° articulating camera make the Si500 and Si300 easy to wear and operate. Use the slider to manually record or push the emergency button for automatic recording. Voice and data content are secured and maintain integrity from the moment of capture through storage and sharing with CommandCentral Vault.



COMMANDCENTRAL VAULT



STREAMLINE CONTENT REVIEW AND SHARING

Two officers pursue a suspect while a bystander captures the action on her smartphone.

She uploads the video to YouTube along with a negative summary.

At the station, the content from the officers' Si500 is automatically uploaded and auto-tagged so it can be instantly searched by officer name, CAD incident ID and location and played back over a geospatial map.

The officers annotate the video to identify their actions while off-site command staff review and flag the video to adhere to retention policies.

Analysts use rapid auto-redaction to protect the privacy of bystanders, then share it with the media using the integrated FOIA module.

The new footage shows the officers acted appropriately and confirms the citizen video left out key details.

OPERATIONS SIMPLIFIED

Motorola's CommandCentral Vault is more than just storage, it's true end-to-end content management. All content is securely stored, simple to manage and easy to share with judicial personnel, citizens and media. CommandCentral Vault is cloud based and integrates seamlessly with the Si Series video speaker microphone. It aggregates evidence from a variety of multimedia sources (body-worn video, surveillance video) and stores them in a single place. Now you can capture, review, manage and share digital evidence simply and efficiently.

CommandCentral Vault supports automatic uploads, tags and correlation of metadata. Your agency saves valuable time collecting and storing digital evidence

and can respond to information requests swiftly. With CommandCentral Vault you can reduce administrative overhead and simplify workflows while maintaining policy and compliance to help save time and enhance community support.

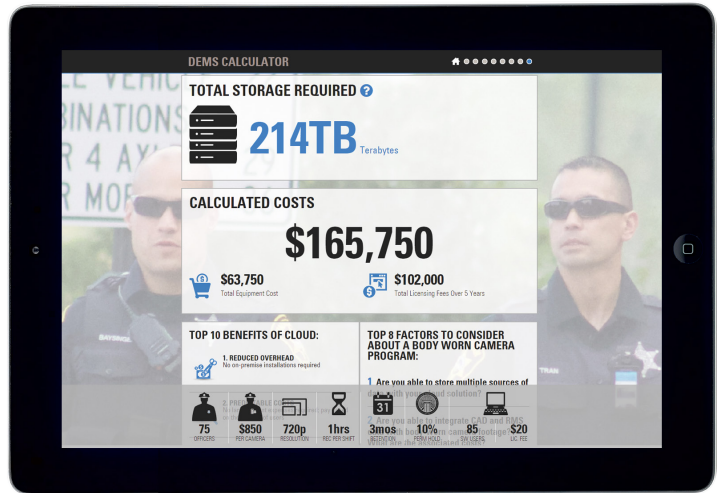
CommandCentral Vault features:

- Complete content management
- Cloud storage that meets CJIS standards
- Predictable costs with no surprise fees
- Automated redaction
- Auto correlation of metadata
- End-to-end chain of custody
- Fast, easy evidence sharing

PLANNING A BODY-WORN PROGRAM?

Leverage Motorola's expertise to help you calculate your estimated storage and program costs using our DEMS calculator.

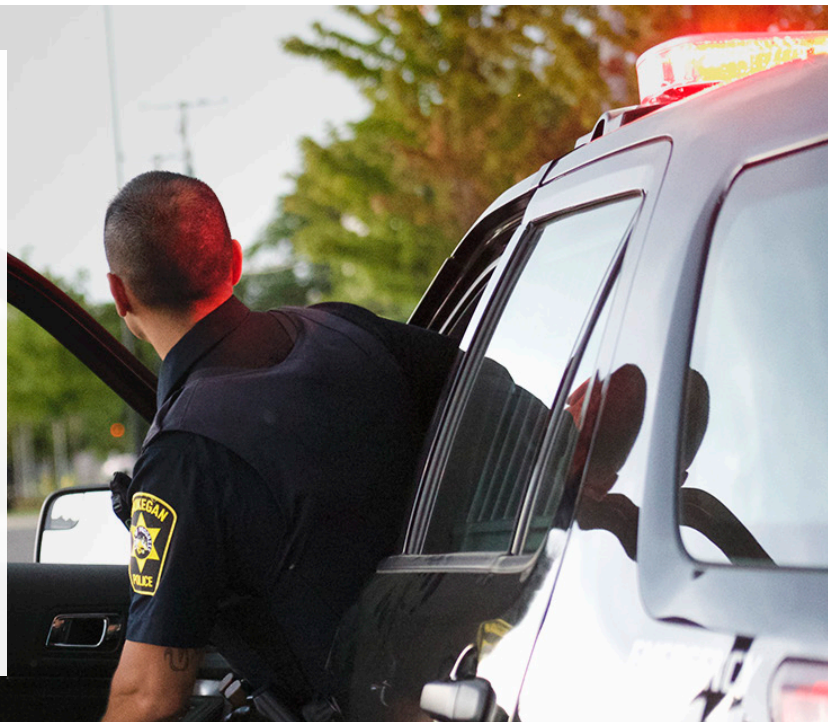
www.motorolasolutions.com/demscalculator



SMART TECHNOLOGY TRANSFORMS THE WAY YOU RESPOND

Look to a globally-trusted partner to navigate the process with you, from mobilizing and managing mission critical devices and networks to managing digital content. For over 85 years, we have listened, learned and innovated with public safety agencies worldwide.

Motorola can help you fully integrate next generation solutions and services effectively because we have worked with agencies, side-by-side, to serve their mission critical communication needs. With our in-depth expertise in smart public safety devices, applications and networks, we can help you increase situational awareness, preserve mission critical intelligence, improve transparency and build a stronger partnership with your community.



For more information about our Digital Evidence Management Solution, contact your Motorola representative or visit motorolasolutions.com/dems

SOURCES

1, 2 Implementing a Body-Worn Camera Program, Police Executive Research Forum, 2014

Motorola Solutions, Inc. 1301 East Algonquin Road Schaumburg, Illinois 60196, U.S.A. 800-323-3982 motorolasolutions.com

MOTOROLA, MOTO, MOTOROLA SOLUTIONS and the Stylized M Logo are trademarks or registered trademarks of Motorola Trademark Holdings, LLC and are used under license. All other trademarks are the property of their respective owners. ©2016 Motorola, Inc. All rights reserved. 05-2016